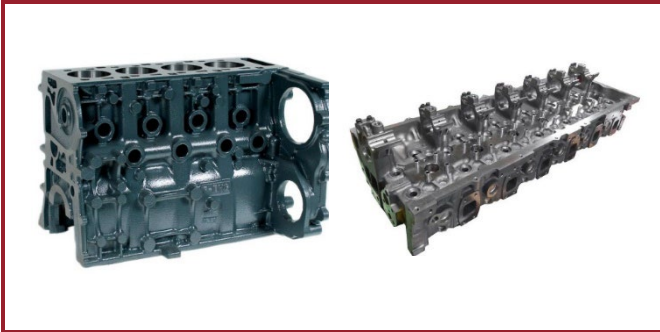
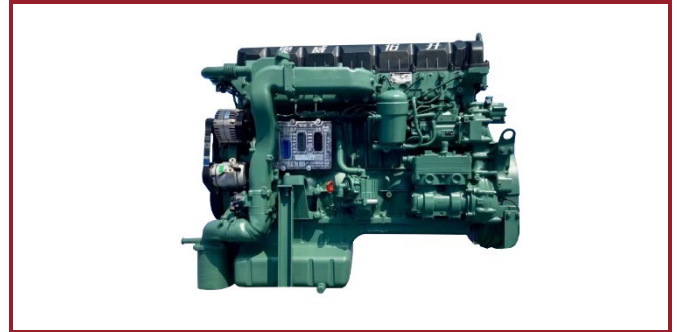


## Series Production References – Commercial Vehicles

SinterCast supports series production of commercial vehicle engine components in Europe, Asia, and the Americas. The SinterCast technology has supported the production of over 30 commercial vehicle cylinder blocks and heads, used in more than 20 different engines.



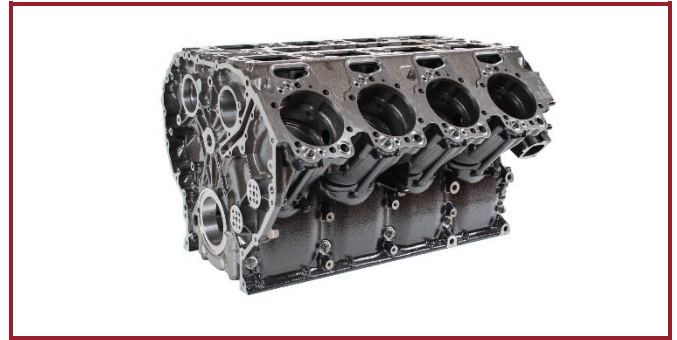
Hyundai 3.9, 5.9, 6.3 and 6.8 Litre Cylinder Blocks  
Hyundai 5.9, 6.3, 6.8, 9.9 and 12.7 Litre Cylinder Heads



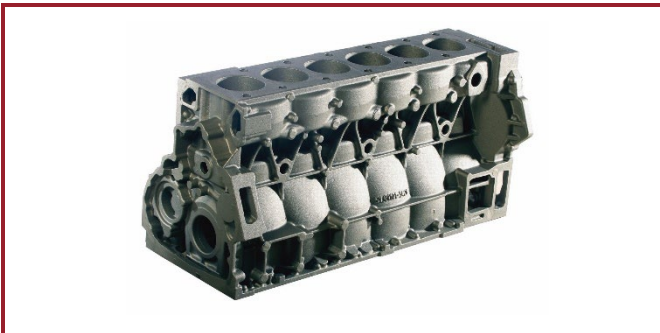
FAW 16 Litre Cylinder Block



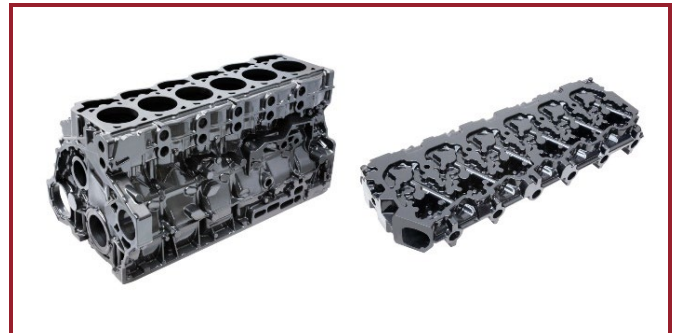
Traton 13 Litre Cylinder Block and Head (Scania, MAN, Navistar, VW)



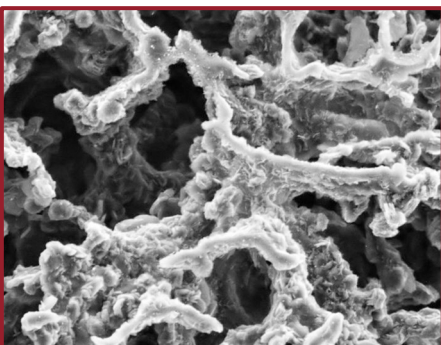
Scania 16 Litre Cylinder Blocks



MAN 10.5 and 12.4 Litre Cylinder Blocks and Heads



DAF 10.8 and 12.9 Litre Cylinder Blocks and 12.9 Litre Cylinder Head



SinterCast® is the world's leading supplier of process control technology for the reliable high volume production of Compacted Graphite Iron (CGI). The properties of CGI enable improved transport solutions, increasing efficiency and reducing carbon emissions in passenger vehicle, commercial vehicle and industrial power applications. As a specialist supplier of precision measurement and process control solutions to the metals industry, SinterCast also supplies the SinterCast Ladle Tracker® and SinterCast Cast Tracker® technologies, to improve production efficiency and Industry 4.0 traceability in a variety of applications. With 57 installations in 13 countries, SinterCast is a publicly traded company, quoted on the Small Cap segment of the Nasdaq Stockholm stock exchange (SINT).