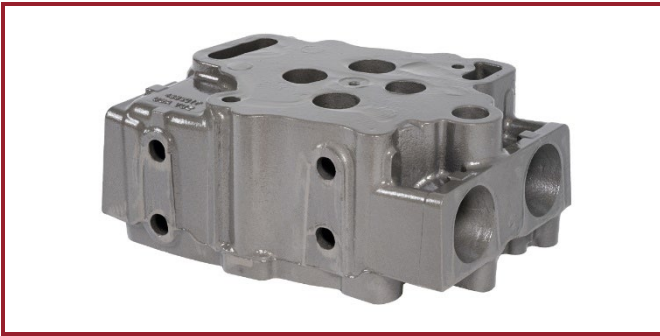
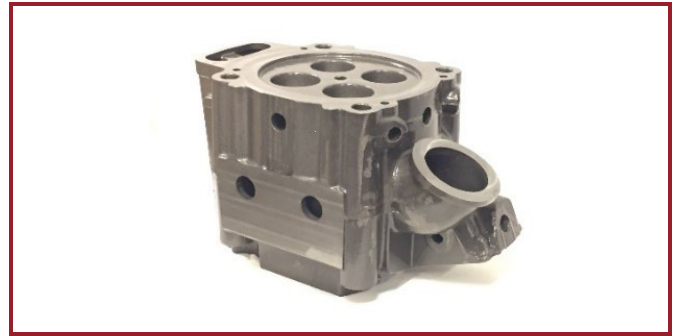


Series Production References – Industrial Power

Beyond the core cylinder block and head market, the SinterCast technology has supported the production of a variety of components that range from 2.7 kg to 9 tonnes. These components have been used in rail, marine, construction, stationary power, and agriculture applications.



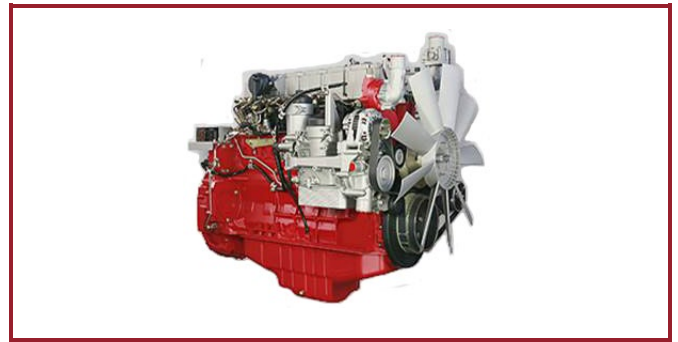
Cummins QSK Cylinder Head
Locomotive and Stationary Power Engines



Wabtec Cylinder Head
Locomotive and Stationary Power Engines



Caterpillar Cylinder Heads
Off-Road Applications



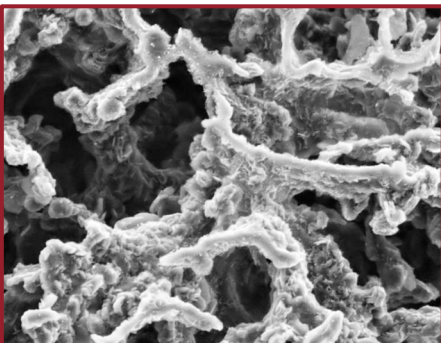
Deutz 7.8 Litre Cylinder Head
Agricultural and Construction Equipment



Industrial Power Engine Frames and Cylinder Heads
Allen Diesels, Cameron Compression, Jenbacher, MTU and Waukesha Engine



Large Cylinder Liners and Piston Rings
Marine and Stationary Power Engines



SinterCast® is the world's leading supplier of process control technology for the reliable high volume production of Compacted Graphite Iron (CGI). The properties of CGI enable improved transport solutions, increasing efficiency and reducing carbon emissions in passenger vehicle, commercial vehicle and industrial power applications. As a specialist supplier of precision measurement and process control solutions to the metals industry, SinterCast also supplies the SinterCast Ladle Tracker® and SinterCast Cast Tracker® technologies, to improve production efficiency and Industry 4.0 traceability in a variety of applications. With 57 installations in 13 countries, SinterCast is a publicly traded company, quoted on the Small Cap segment of the Nasdaq Stockholm stock exchange (SINT).